

ABBEY DLD
GROUP OF COLLEGES
CAMBRIDGE • LONDON • MANCHESTER



ACCESS **YOUR** FUTURE

INTERNATIONAL PROSPECTUS 2022/23





CONTENTS

Welcome	3
5 Reasons to Study at Abbey DLD	6
Results & Destinations Highlights	7
What's Included?	9
Courses & Subjects	11
GCSE	13
A Level	19
International Foundation Programme	25
BTEC	31
Academic Studies with Football or Basketball Training	35
Preparation Courses	39
British Boarding School Experience (BBSE)	41
English with Sport	43
Study Support	45
Outstanding Colleges, Outstanding Locations	49
Boarding at Abbey DLD	51
Abbey College Cambridge	53
Cambridge	55
DLD College London	67
London	69
Abbey College Manchester	81
Manchester	83
Student Destinations 2021	95
Term Dates and Fees	109
Boarding Fees	113
Apply Now	115



WELCOME

“Thank you for considering us for your studies, each of our three colleges has their own unique personality, but they are united by a set of common goals. At Abbey DLD we strive to achieve the highest academic standards whilst providing a welcoming, safe, high-quality learning and boarding experience for students from around the world.

As part of the Alpha Plus Group, the UK’s largest and most successful independent education provider, our colleges are proud to provide the ‘gold standard’ of education. This means you can rest assured that your studies will be guided by our principles of strong leadership, governance and high-quality teaching, and you will benefit from our many years’ of experience of helping international students to achieve their best.

So I invite you read on and learn more about our three fantastic colleges, they are special places, where international students and passionate teachers come together to achieve academic success and personal growth. You are at the start of an exciting journey, and we would very much like for one of our colleges to become your bridge to university and beyond.”

Mark Hanley-Browne
CEO, Alpha Plus Group







**“I HAVE BEEN TAUGHT
BY SOME **VERY**
TALENTED TEACHERS.”**

Ian from Malaysia

A Level student, now studying Computing
at Imperial College London.



5 REASONS TO STUDY AT ABBNEY DLD



1. EXPERTS IN INTERNATIONAL STUDY

Our colleges have many years' experience of teaching and supporting international students. This means we can create personalised learning plans and work closely with our students to achieve their academic goals.



2. ELITE TEACHERS

Our teachers are experienced, full-time professionals, experts in their fields who know the curriculum inside and out. We only select the best teachers who share our passion to work with and support international students.



3. TOP-RANKED RESULTS AND DESTINATIONS

Across a wide range of academic programmes, our students' results are amongst the best in the country. We take pride in the fact that most of our students progress to top ranking, prestigious universities.



4. 5* URBAN BOARDING

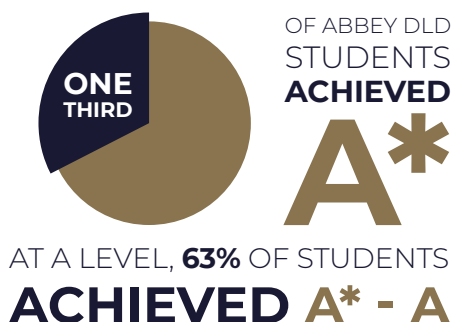
We know how important it is to feel at home whilst you study. That's why our college boarding facilities are some of the best you will find, with students' safety, wellbeing and comfort our priorities.



5. GAIN EXPERIENCE OUTSIDE OF YOUR STUDIES

Our colleges offer a wide range of after school and weekend clubs and activities, many of which are inclusive of fees. We believe that students should gain a wide range of experience outside of their studies and fully experience British culture and life.

RESULTS AND DESTINATIONS HIGHLIGHTS



OVER **70%**
AVERAGE SCORE,
INTERNATIONAL
FOUNDATION PROGRAMME



40+
STUDENTS PROGRESSED TO
OXBRIDGE
SINCE 2010

50%
OF STUDENTS JOINED A
RUSSELL GROUP
UNIVERSITY

18
STUDENTS PROGRESSED TO
MEDICINE
IN 2021



“MY TEACHERS HELPED ME TO ACHIEVE MY BEST, AND THEY WOULD ALWAYS GIVE EXTRA HELP WHEN I NEEDED IT MOST. AFTER SCHOOL CLUBS AND TALKS GAVE ME ADDITIONAL INFORMATION ABOUT THE SUBJECTS I WAS STUDYING.”

Ana from Georgia

A Level student, now studying Management at the London School of Economics and Political Science.

WHAT'S INCLUDED?



CONFIRMATION OF
ACCEPTANCE
FOR STUDIES [CAS]

ACADEMIC ENGLISH
ADMISSIONS TEST



APPLICATION
AND SUPPORT



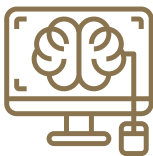
INDUCTION
PROGRAMME



TEXTBOOKS

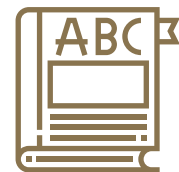


PERSONAL
TUTORS



STUDENT EMAIL ACCOUNT
AND ACCESS TO
LEARNING
SOFTWARE

WIFI ACCESS
IN COLLEGE AND
BOARDING HOUSES



ACADEMIC
ENGLISH

When you apply to study at an Abbey DLD College the following resources and services are included in your fees.

AFTER SCHOOL AND WEEKEND CLUBS AND ACTIVITIES



NATIVE LANGUAGE
A LEVEL SUPPORT
AND EXAM ENTRY

UCAS AND UNIVERSITY
APPLICATION SUPPORT



ACCOMMODATION
DURING HALF-TERM
AND EASTER HOLIDAYS



SPECIAL
EDUCATIONAL NEEDS
SUPPORT

ENTRANCE
TO ACADEMIC CHALLENGES
AND COMPETITIONS



PUBLIC EXAM
ENTRANCE FEES



SPECIALIST
UNIVERSITY APPLICATION
PREPARATION

SUBJECT RELATED
TRIPS





COURSES AND SUBJECTS

We offer a range of academic programmes for students aged from 13 to 21 years.

COURSES AVAILABLE

COURSE	FOR STUDENTS AGED	AVAILABLE AT	PROGRESS TO
Academic Preparation Programme Pre-Sessional Programme	14 – 15 years 13 - 16 years	London Cambridge	GCSE, A Level, IFP
British Boarding School Experience	14 – 20 years	Cambridge, London	Any full course
English with Sport	14 – 21 years	Manchester	Any full course
GCSE	14* – 16 years	Cambridge London, Manchester	A Level, IFP, BTEC
A Level	16 – 19 years 16 - 20 years	Cambridge, London Manchester	Undergraduate course at university
International Foundation Programme (IFP)	17 – 21 years 17 - 20 years	Cambridge, Manchester London	Undergraduate course at university
Academic Studies with Football or Basketball Training	14 – 20 years	Manchester	A Level, IFP, Undergraduate course at university
BTEC	16 - 19 years	London	Undergraduate course at university

* Abbey College Cambridge will consider 13 year old GCSE applicants on a case by case basis.



GCSE

General Certificates of Secondary Education (GCSE) represent the first stage on the path to study at a UK university. Most universities will ask for at least 5 GCSE passes for entry.

GCSE COURSE DURATION AND START DATES

DURATION	STARTS EVERY	ENGLISH REQUIREMENT (MIN)	AVAILABLE AT
One year	September	IELTS 5.0	Cambridge, London, Manchester
18 month	January	IELTS 4.5	Cambridge, London, Manchester
Two year	September	IELTS 4.5	Cambridge, London, Manchester





**“I HAVE RECEIVED
PLENTY OF SUPPORT
AND ENCOURAGEMENT
TO KEEP PUSHING AND
IMPROVING MYSELF TO
BECOME MY BEST
VERSION.”**

Victoria from Uruguay

GCSE student, now studying A Levels.



Why study GCSE?

Depending on the duration of studies, GCSE students will take between 6-9 subjects. GCSEs provide a great 'grounding', offering students a wide breadth of subjects, time to familiarise themselves with the UK education system and improve their English (English Language is a compulsory GCSE subject). GCSEs also provide a natural pathway to A Levels, and students who have taken them tend to perform better in higher level examinations.

How are they taught?

GCSE course content is broken up into units, each unit is taught in a linear structure, with an emphasis on understanding the connection between topics within the wider context of the subject.

Assessment

GCSEs are assessed by an end of course exam. Some subjects will also be assessed by coursework or practical work.

ABBHEY DLD GCSE RESULTS 2021

	GRADE 9	GRADES 9-8	GRADES 9-7	GRADES 9-6	GRADES 9-5
Abbey College Cambridge	25%	45%	65%	78%	92%
DLD College London	22%	40%	62%	80%	92%
Abbey College Manchester	14%	28%	49%	60%	91%
All College Average	22%	40%	61%	75%	92%

GCSE SUBJECTS

Our colleges offer the following GCSE subjects to choose from:

	CAMBRIDGE	LONDON	MANCHESTER
Accounting			✓
Art & Design	✓	✓	✓
Biology	✓	✓	✓
Business Studies	✓	✓	✓
Chemistry	✓	✓	✓
Economics	✓	✓	
English Literature		✓	
English Language	✓	✓	✓
Film Studies		✓	
French			✓
Further Mathematics	✓		✓
Geography		✓	✓
History	✓		
Mathematics	✓	✓	✓
Photography			✓
Physics	✓	✓	✓
Religious Studies			✓





A LEVEL

Advanced Level courses, commonly known as 'A Levels' are the most widely recognised qualification for entry to UK universities.

A LEVEL COURSE DURATIONS AND START DATES

DURATION	STARTS EVERY	ENGLISH REQUIREMENT (MIN)	AVAILABLE AT
18 month	January	IELTS 5.5	Cambridge, London
Two year	September	IELTS 5.5	Cambridge, London, Manchester

The pre-sessional programme can be studied for either one, two or three terms prior to the two year A Level programme.





“MY TEACHERS HAVE CONSISTENTLY BEEN ABLE TO EXPLAIN CONCEPTS AND PROCESSES IN A WAY WHICH IS EASY TO UNDERSTAND AND RETAIN. THEY HAVE EXPLAINED IDEAS OUTSIDE OF THE SYLLABUS, WHICH HAS ALLOWED ME TO FURTHER MY UNDERSTANDING.”

Luca from the United Kingdom

A Level student, now studying Physics at University College London.



Why study A Levels?

Most students will take 3 or 4 A Level subjects over the duration of their studies. A Levels offer a good balance between specialisation and choice, allowing students to focus on the subjects that really interest them whilst maintaining breadth of subject choice. A Levels also offer progression to the widest range of universities and are the best option for students looking to join a top-ranked university.

How are they taught?

Course content is divided into different sections, and students are encouraged to develop and understand the links between them. Teaching is based upon developing an understanding of the key concepts and skills of the subject, with a strong focus on practical real-world application.

Assessment

A Levels have a linear structure, which means that all exams take place at the end of the final year. Most A Level subjects are assessed by written examination unless the course has a significant practical focus (such as in arts or the sciences).

ABBHEY DLD A LEVEL RESULTS 2021

	A*	A*-A	A*-B	A*-C	A*-D	A*-E
Abbey College Cambridge	43%	74%	93%	99%	100%	100%
DLD College London	26%	56%	82%	95%	99%	100%
Abbey College Manchester	34%	63%	86%	97%	99%	100%
All College Average	33%	63%	86%	97%	99%	100%

A LEVEL SUBJECTS

We offer the following A Level subjects to choose from across our colleges:

	CAMBRIDGE	LONDON	MANCHESTER
Accounting	✓		✓
Art & Design	✓	✓	✓
Biology	✓	✓	✓
Business Studies	✓	✓	✓
Chemistry	✓	✓	✓
Classical Civilisation		✓	
Computer Science	✓	✓	
Drama		✓	
Economics	✓	✓	✓ (Subject to Demand)
English Language			✓
English Literature	✓	✓	✓
Environmental Science			✓
Film Studies		✓ (Subject to Demand)	
Further Mathematics	✓	✓	✓
Geography	✓	✓	✓
Graphic Communication		✓	
History	✓	✓	
Mathematics	✓	✓	✓
Media Studies		✓	
Music		✓ (Subject to Demand)	



	CAMBRIDGE	LONDON	MANCHESTER
Photography		✓	✓
Physics	✓	✓	✓
Politics	✓	✓	
Psychology	✓	✓	✓
Religion, Philosophy & Ethics			✓
Sociology		✓	
Textiles			✓

The following language A Levels are also available.

Arabic	✓		✓
Chinese	✓	✓	✓
French		✓	✓
German		✓	✓
Italian		✓	
Russian	✓	✓	✓
Spanish		✓	✓

 Exam Only
  Subject to Demand



INTERNATIONAL FOUNDATION PROGRAMME

Our International Foundation Programme (IFP) is an intensive year 13 academic programme that offers international students direct entry to a wide range of UK universities.

INTERNATIONAL FOUNDATION PROGRAMME COURSE DURATIONS AND START DATES

DURATION	STARTS EVERY	ENGLISH REQUIREMENT (MIN)	AVAILABLE AT
One year	September	IELTS 5.0	Cambridge, London, Manchester
18 month	January	IELTS 4.5	Manchester
Two year	September	IELTS 4.0	Manchester





**“STUDYING HERE
HAS HELPED ME
TO BECOME MORE
RESPONSIBLE AND
PREPARED FOR LIFE
AT UNIVERSITY.”**

Lujain from Egypt,

Foundation student, now studying
Medicine at the University of Buckingham.



Why study International Foundation Programme?

Unlike many foundation programmes, our destinations are not limited to a choice of one or two partner universities. This means students are free to progress to a wide range of UK universities, including many UK top 20 ranked and Russell Group institutions.

How are they taught?

The programme offers a range of subject-related pathways, which give access to complementary subjects at university. Each pathway is made up of a number of modules, depending on which pathway you choose you might have a choice of modules, they may be all compulsory, or a mix of elective and compulsory modules.

Each module is assessed individually, with three assessment points through each term and an opportunity to resit modules if necessary. Students achieve an overall score based on all their individual module assessments.

Progression

Our foundation students can progress to a wide-range of top-ranked universities. University destinations in 2021 included Durham University, the University of Bath, King's College London, the University of Manchester, City, University of London, and the University of York.

ABBEY DLD IFP RESULTS 2021

	ABBEY COLLEGE CAMBRIDGE	DLD COLLEGE LONDON	ABBEY COLLEGE MANCHESTER
Overall Average Score (all pathways)	77%	69.5%	70%

INTERNATIONAL FOUNDATION PROGRAMME PATHWAYS

	CAMBRIDGE	LONDON	MANCHESTER
Art		✓	
Biomedical Science		✓	
Business & Economics		✓	✓
Business Management & Economics	✓		
Computer Science & Mathematics		✓	
Creative Arts			✓
Engineering	✓	✓	✓
Environmental Science			✓
Fashion Management		✓	
Humanities	✓		✓
Mathematics & Economics		✓	



	CAMBRIDGE	LONDON	MANCHESTER
Medicine	✓		✓
Science	✓		✓
Social Sciences		✓	
Sport			✓

Special features

An exclusive agreement gives our Fashion Management and Art students the option to progress on to study at the London, Milan, or Paris school of the prestigious Istituto Marangoni. Students can also progress onto fashion programmes at other top universities.

Our Medicine pathway is accepted by the medical schools of Aston University, Brunel University, the University of Buckingham, the University of Central Lancashire (UCLan), the University of Nicosia, St George's University Grenada, Queen Mary University of London (Malta campus), the Royal College of Surgeons in Ireland, and the American University of Antigua.



BTEC

Available at DLD College London, Business and Technology Education Council Diplomas (known as BTECs) offer an alternative route to study at university. They provide a more practical, real-world approach to learning alongside delivering a key theoretical background.

BTEC COURSE DURATIONS AND START DATES

DURATION	STARTS EVERY	ENGLISH REQUIREMENT (MIN)
One year	September	IELTS 5.5
Two year	September	IELTS 5.5





“I ENJOYED DOING ALL THE ASSIGNMENTS AND DOING LOTS OF PRACTICAL WORK. TEACHERS HELPED ME A LOT, ESPECIALLY WHEN I HAD DIFFICULTIES WITH MY WRITTEN WORK.”

Oliver from the United Kingdom

BTEC student, now studying Sports Media at the University of Chichester.

Why study BTECs?

Every year, over a quarter of the students accepted into UK universities have studied BTECs. With their focus on work related learning and real-world application, BTECs have grown in popularity because they allow students to develop practical skills related to the career they want to pursue, as well as understand the theory that underpins them.

DLD BTEC students have recently worked with Ticketmaster, the British Film Institute (BFI) and Harrods. Having the opportunity to engage with real world employers is an element that separates BTEC courses from traditional study. They are recognised in more than 100 countries and in recent years DLD graduates have moved on to study at top UK universities, and in Europe and North America.

How are they taught?

DLD offers BTEC qualifications that are the equivalent to taking three (two year programme) or one (one year programme) A Level subjects. BTECs are divided into units, which cover specific areas of knowledge, skills, and understanding required by a particular sector or industry. They are a flexible qualification and can be taken alongside A Level.

Assessment

BTECs offer students a variety of assessment methods which allows them to build on their strengths. Each course provides students with a mix of project-based assessments, which typically involve employer links as well as written tests, online assessments, and examinations.

DLD COLLEGE LONDON BTEC RESULTS 2021

	D*D*D* - DDD	D*D*D* - MMM
% of students achieving	50%	93%

Results key: D=Distinction, M=Merit.

BTEC PATHWAYS

APPLIED SCIENCE	BUSINESS	COMPUTER SCIENCE	CREATIVE DIGITAL MEDIA PRODUCTION
✓	✓	✓	✓



ACADEMIC STUDIES WITH FOOTBALL OR BASKETBALL TRAINING

Available at Abbey College Manchester, these exciting courses are aimed at students who have a passion for playing football or basketball, and who want to continue training whilst they study.

Why study Academic Studies with Football or Basketball Training?

This is a unique opportunity for students to gain qualifications for entry to university alongside intensive football or basketball training, which could lead to playing professionally or semi-professionally in the future. Football or Basketball training sessions are added to students' timetables without impacting on the core study requirements whilst still allowing them to gain a strong academic qualification.



How is it taught?

Students will study on our GCSE, A Level or International Foundation Programme in the mornings and have football or basketball training sessions led by professional coaches in the afternoon. For football students there is a choice between two pathways, 'Development' and 'Elite' with the elite programme offering a more intensive training and playing schedule aimed at students who want to go on to play at professional or semi-professional level.

Football Programmes and features.

ELITE PROGRAMME	DEVELOPMENT PROGRAMME
<ul style="list-style-type: none"> • 5 Afternoon training sessions per week. • Player progression assistance, support and advice. • Regular one-on-one development sessions. • Represent the college in league matches. • Analysis sessions via veo. • Gym membership. 	<ul style="list-style-type: none"> • Up to 3 afternoon training sessions per week. • Termly reports and regular feedback from coaches. • Represent the college in some friendly and league matches. • Gym membership is available at additional cost.



“I WAS ABLE TO BALANCE STUDYING AND TRAINING BECAUSE MY TEACHERS WERE ALWAYS READY AND WILLING TO PUT IN THOSE EXTRA HOURS TO HELP ME UNDERSTAND.”

Daniel from Nigeria

Academic Studies with Football Training student, now studying Economics at Loughborough University.



Basketball training

Basketball training takes place at the British National Basketball Centre and is led by former Great Britain basketball international Jamie Edwards.

Training sessions are delivered each afternoon by professional and experienced coaches at the Manchester Giants practice facilities. Students are taught to integrate 'on court' basketball skills together with 'off-court' life skills to secure academic and sporting success.

Assessment

Assessment will follow the specifications of the academic course students choose to pursue, these are GCSE, A Level, and International Foundation Programme.

Facilities

Our student athletes train at purpose-built professional standard training facilities. Training sessions are run by professional coaches. Basketball students train at the English National Basketball Centre alongside the Manchester Giants professional basketball team. For our students who want to take the next step, we organise regular trials with professional teams.

PREPARATION COURSES

Our Pre-Sessional Programme (in Cambridge) and Academic Preparation Course (in London) are designed to raise students' ability in general and subject specific English and prepare them to join our academic programmes.

PREPARATION COURSES DURATION AND START DATES

PROGRAMME	DURATION	STARTS EVERY	AVAILABLE AT
Academic Preparation Programme	One – three terms	January, April, September	London
Pre-Sessional Programme	One – three terms	January, April, September	Cambridge

How is it taught?

Dependent on the students' level of language and academic abilities, these programmes can be taught for one, two or three terms. As well as strengthening English language and academic skills, we will prepare students to learn in a typical British classroom environment. This includes skill development in areas such as pair work, project work, independent reading, discussion work, team building. Physical Education (PE) and Personal Health and Social Education (PHSE) also form part of our preparatory curriculum.

Assessment

Students have regular internal tests on the full range of English language skills; reading, writing, listening and speaking throughout the programme. Formal external assessments take place at the end of the programme which will be used to determine the student's suitability to progress onto the relevant academic programme.



“LEARNING ENGLISH IS QUITE DIFFICULT COMPARED TO LEARNING AT HOME IN CHINA, BUT MY TEACHERS HAVE HELPED ME IN EACH SUBJECT AND IN SKILLS LIKE WRITING A GOOD REPORT OR ESSAY.”

Xiaonuo from China

Pre-Sessional student, now studying A Levels.



BRITISH BOARDING SCHOOL EXPERIENCE (BBSE)

Spend a term or two studying the British curriculum and improving your English whilst boarding in the heart of one of the UK's most exciting cities.

Course benefits:

- Improve your written and spoken English.
- Live and study in one of two beautiful, historic and vibrant British cities.
- Study the globally recognised and admired British curriculum.
- High quality accommodation and pastoral support included.
- Study and live with ambitious students from around the world.



Whilst you study you will become a full member of our diverse student community, with access to our exciting extra-curricular programme of weekly clubs, sports and activities, lectures, and university preparation sessions.

Upon completion of your studies, you will receive a comprehensive academic report and completion certificate to take home. If you enjoy your time here, you can also choose to join the full GCSE, A Level or International Foundation Programme course and complete your university studies in the UK or at home.

BBSE COURSE DURATION AND START DATES

DURATION	STARTS EVERY	AVAILABLE AT
One or Two Terms	January, April, September	Cambridge, London



STUDY ENGLISH WITH SPORT

Spend a term improving your English language skills and developing your football or basketball skills.

Course benefits:

- Improve your written and spoken English.
- Live and study in the sporting capital of the UK, the vibrant city of Manchester.
- Study in the classroom in the morning and then attend one of our professional sports training facilities in the afternoon - football or basketball.
- High quality accommodation and pastoral support included.



You will be joining students from the UK and around the world at our central Manchester campus. During the morning you will attend English lessons and you will have access to a personal tutor who will oversee your learning and development.

During the afternoon you will choose to have either football or basketball coaching delivered by professional coaches. There will also be the opportunity to take part in competitive matches. Transport to and from the sports training facilities is provided.

ENGLISH WITH SPORT COURSE DURATION AND START DATES

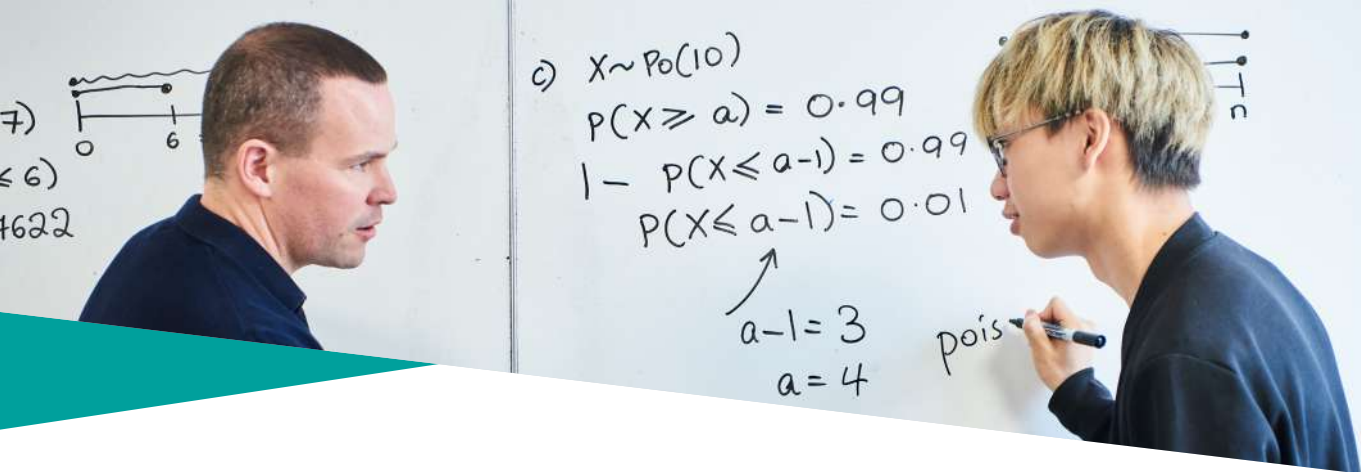
DURATION	STARTS EVERY	AVAILABLE AT
One or Two Terms	January, April, September	Manchester



STUDY SUPPORT

Our colleges offer personalised study support to every student at every level.

This support ranges from bespoke support for students with special education needs and focused tutoring to help turn that A grade into an A*, through to super-curricular and stretch programmes allowing students to explore higher level topics and develop their thinking outside of the curriculum.



Our study support is designed to help students achieve top grades and secure their place at a top university, it includes:



UNIVERSITY PREPARATION

All three of our colleges offer university preparation programmes as standard, with a programme of preparation classes taught by experts in the subject area you plan to study at university.



AFTER SCHOOL ACADEMIC ACTIVITIES

We offer a challenging programme of after school lectures, activities and revision classes. Sessions are delivered by tutors, former students, and selected guests from the academic and business worlds. These sessions often focus on contemporary developments, or on subjects not covered by the traditional syllabus.



PERSONAL TUITION

Students have access to a dedicated personal tutor. They will help to guide you academically and to understand the routine of college life. Tutors provide regular updates on your academic progress to your parents and/or guardian.



ACADEMIC ENGLISH

A Level, Foundation and BTEC students who do not speak English as their first language will attend up to five hours of Academic English lessons per week. These lessons will help improve your understanding of lesson content and context and enable you to meet the English language requirements of your first choice university.



UCAS SUPPORT

Our Academic team will help guide you through the university admissions process, providing advice and guidance on university selection, completing your application form, and writing your personal statement.



**“MY TEACHERS HAVE SUGGESTED
EXTRA WORK AND RESOURCES
TO BROADEN MY KNOWLEDGE.
THEY HELPED ME FIND
UNIVERSITIES THAT OFFER MY
COURSE AND PIN DOWN MY
CHOICES FOR APPLICATION.
I ALSO LEARNED ABOUT
CAREERS AFTER UNIVERSITY.”**

Yiping from China (2020 Graduate)

A Level student, now studying Experimental Psychology at the University of Oxford.





OUTSTANDING **COLLEGES,** OUTSTANDING **LOCATIONS**

Our colleges are located in three of the UK's most exciting cities. Each has its own unique personality, but we are united by the goal of providing a high quality British education to students from around the world.

OUR COLLEGES AT A GLANCE



Abbey College Cambridge

- Located in the heart of the world's most prestigious university city.
- Focusing on traditional courses and subjects.
- Wide range of on and off-campus boarding options.
- Extensive extra-curricular programme.
- Quiet learning environment.



DLD College London

- Established as a top London College since 1931.
- Central London's only purpose built, on-campus boarding school.
- Wide range of course and subject options.
- Specialist preparation for top-ranked London and global universities.
- London offers unique and exciting cultural and academic experiences.



Abbey College Manchester

- Small and friendly college community where more than one third of students are British.
- Manchester is one of the best British cities to live and study in.
- Pathway to world-class northern universities.
- Innovative and flexible courses.
- Experts in preparing students for medicine.



BOARDING AT ABBEY DLD

We know how important it is to have a place to call your own whilst you study, and that is why we have invested to provide our students with some of the best quality accommodation found at any UK boarding school.

Our student bedrooms are designed to offer a quiet haven where students can relax and study. We offer a range of different room options, but all come with features such as Wi-Fi, study desks and ample clothes and belongings storage as standard.

Outside of your room, we offer communal areas to meet with friends, socialise and study. Our common rooms feature well-equipped kitchens, lounges, and games facilities.

Our live-in house parents provide 24/7 support and care to students, making sure that they feel well cared for, make friends, and keep on track in their studies.

All our boarding houses are secure buildings, with controlled access, on-site security and CCTV.





ABBEY COLLEGE CAMBRIDGE

Your pathway to an elite university.

Since its foundation in 1994, Abbey College Cambridge has developed a reputation for academic excellence. As Cambridge's leading international college, we are experts in teaching and supporting international students, and we do so in a community that is energised by the love of learning.

At Abbey College Cambridge students make friends from all over the world, share unforgettable experiences, and go on to achieve amazing things together.

400+
STUDENTS



40+
**DIFFERENT
NATIONALITIES**

300+
**STUDENTS TO
TOP 5 UNIVERSITIES
SINCE 2010**





“EVERY DAY OF YOUR STUDIES AT ABBEY COLLEGE CAMBRIDGE WE WILL CHALLENGE YOU TO ACHIEVE YOUR ABSOLUTE BEST.”

Dr Julian Davies, Principal



CAMBRIDGE

The world's most prestigious university city.

Cambridge is a unique fusion of the traditional and the modern, the everyday and the extraordinary, a small English city that has shaped our collective history and continues to influence our future.

For over 800 years the city has been home to the world-famous University of Cambridge. Consistently voted as one of the world's best, the university has produced countless ideas and discoveries that have changed our world and boasts more than 100 Nobel laureates. Our students talk of being inspired by the academic atmosphere of the city, and we are able to offer privileged access to university colleges, faculties and research institutes.

Away from studies, Cambridge is a small, quiet, and safe city, it is also one of the UK's most beautiful places. There are an enormous range of cultural, leisure and entertainment opportunities within the city and surrounding countryside.





COLLEGE HIGHLIGHTS



UNIQUE PRE-DEGREE DIPLOMA PROGRAMME

Our unique preparation programme is designed to maximise your chances of university success. You will be taught by tutors who are experts in the subject area you plan to study at university, building valuable knowledge and developing a range of skills and experience that will help you stand out as a top candidate for the best universities.



ELITE UNIVERSITY PREPARATION

In addition to our Pre-Degree Diploma, we offer specialist preparation programmes for students targeting Oxbridge or Medicine. Both programmes offer extensive support in vital areas such as admissions testing and interview skills.



'ABBEY INSPIRES' EVENING ACTIVITIES

Every week we offer a changing programme of evening lectures, practical activities and revision classes as part of our 'Abbey Inspires' programme. Delivered by our tutors and selected guests from the academic and business worlds, sessions are designed to extend knowledge and foster enquiry by focusing on contemporary developments and topics not covered by the traditional subject syllabus.



MORE THAN 50 WEEKLY CLUBS

We offer more than 50 exciting staff and student led clubs as part of our 'ABC' Extra-Curricular Programme. Designed to provide you with amazing opportunities to achieve and have fun outside of the classroom, clubs are divided into three categories: Action, Belonging, and Creativity.



PRIVILEGED ACCESS TO THE WORLD'S TOP UNIVERSITY

For over 800 years the city has been home to the world-famous University of Cambridge, it is consistently voted as one of the world's best. Our students are inspired by the academic atmosphere of the city, and we are able to offer them regular privileged access to university colleges, faculties and research institutes.



“CAMBRIDGE HAS A VERY STRONG ACADEMIC VIBE. IT’S A PRIVILEGE TO STUDY HERE WITH THE CLEVEREST STUDENTS AND PROFESSORS IN THE WORLD.”

Jacky from Taiwan (2019 Graduate)

A Level student, now studying Medicine at the University of Cambridge.



ABBEY
COLLEGE
CAMBRIDGE



“CAMBRIDGE OFFERS A RANGE OF ACTIVITIES FOR EVERYONE. ALTHOUGH IT IS A QUIET AND RELAXING CITY, YOU CAN HAVE FUN WHENEVER YOU WANT.”

Farbod from Iran

International Foundation Programme student, now studying Medicine at the Royal College of Surgeons in Ireland.

FOCUS ON ELITE UNIVERSITIES

Every year Abbey College Cambridge students progress to study at some of the world's best universities, including Oxbridge colleges, medical schools and top 10 ranked UK universities.

Our university success is built on three core elements that we like to call our 'Trinity of Excellence'; outstanding academic results, mastery of the English language, and our industry leading 'Elite University Preparation Programme'.

The programme combines bespoke university application preparation and support with undergraduate level knowledge building. The programme is tailored to each individual student's needs, with the ultimate aim to secure a place on their first-choice course at a top-ranked university.

Pre-Degree Diploma

Our Pre-Degree Diploma programme forms the core of our university preparation programme, with two extra hours of in-class teaching each week, supplemented by out of class study. There are multiple subject areas for students to choose from based around the most popular university subjects. We can also support students who want to pursue less commonly chosen subjects. Sessions are led by Abbey College Cambridge tutors who are also subject experts.

Oxbridge preparation

To give our students the best possible chance of success we have partnered with the Oxbridge application experts at Leading Education to deliver an enhanced application programme that we call the 'Oxbridge Candidate Programme'. Students who secure a place on the programme will learn how to approach knowledge building, admissions tests, interviews, and college selection.

Medicine preparation

Students who have joined our Medicine Pre-Degree Diploma Programme will also begin a programme of specialist medical school preparation. The programme will involve 5 hours a week of specialist medicine application preparation sessions delivered by Abbey College Cambridge tutors.

Content covered will include:

- Carefully designed medicine preparation curriculum delivered in weekly timetabled lessons.
- Support in securing medical work experience.
- Medicine application support for both UCAS and non-UCAS routes.
- BMAT and UCAT preparation.
- Interview preparation and support.
- Additional English support.
- Weekly Medic Club.



BOARDING IN CAMBRIDGE

Abbey College Cambridge offers more than 400 student bedrooms in on and off-campus boarding houses.

BOARDING HOUSE AND ROOM OPTIONS

ABBAY HOUSE	On-campus accommodation for students aged between 13-16 years. Room options: Standard Single Room, Superior Single Room, Standard Twin Room, Superior Twin Room. Full-board meals.
PURBECK HOUSE	Off-campus accommodation for students aged 16-21 years. 2-minute walk from college. Room options: Single Studio Room, Single Apartment. Full-board meals.
TRIPOS COURT	Off-campus accommodation for students aged 16-21 years. 5-minute walk from college. Room options: Standard Single Room, Superior Single Room. Full-board meals.
ORCHARD HOUSE <small>AVAILABLE FROM JANUARY 2023</small>	Off-campus accommodation for students aged 16-21 years. 15-minute walk from college. Room options: Standard Single Room, Superior Single Room. Half-board meals.







“I REALLY ENJOYED LIVING IN THE BOARDING HOUSE. THE HOUSEPARENTS ARE ALL VERY NICE AND FRIENDLY AND I LEARNT HOW TO COOK DIFFERENT DISHES IN COOKING CLUB.”

Tiffany from Hong Kong

International Foundation Programme student, now studying Economics at Durham University.



DLD COLLEGE LONDON

A multi award-winning boarding school in the heart of London.

Much like the city that we call home, DLD College London is a fusion of the historic and the modern. Our history dates back to 1931, and we still hold close traditional values such as academic rigour, discipline, and exam success. We have combined these values with a focus on student wellbeing and personal development which means that DLD graduates are well-prepared for life after college.

As central London's only purpose built on-campus boarding school, studying at DLD puts you in the heart of the city. Students wake up to the iconic London skyline, and our home on the South Bank puts some of London's best leisure, cultural and entertainment experiences on your doorstep.

Our co-curricular programme of after school and weekend clubs make the most of our amazing location whilst ensuring that students remain safe and focused on their studies.

300+
STUDENTS



50+
**DIFFERENT
NATIONALITIES**

MORE THAN
60%
OF STUDENTS JOIN A
TOP-RANKED
LONDON UNIVERSITY





“AT DLD WE FOCUS ON EACH STUDENT AS AN INDIVIDUAL, TEAMING HIGH QUALITY TEACHING WITH AWARD-WINNING PASTORAL AND LEARNING SUPPORT TO BUILD THE KNOWLEDGE AND CONFIDENCE THAT ENABLES OUR STUDENTS TO SUCCEED.”



Irfan Latif, Principal



LONDON

An exciting, entrepreneurial, and iconic capital city.

One of the world's great cities, London is the UK's political, cultural and economic heart. It has been said that a person who is tired of London is tired of life. Living and studying here you will find a world of experiences on your doorstep.

The city is filled with iconic sights, from Buckingham Palace and Big Ben to the London Eye and Tate Modern. It is home to more world-class museums, galleries, and cultural institutions than any other European city.

London has been a global city since its foundation, and you will find it to be incredibly multicultural and diverse, a place where you will hear multiple different languages and can eat food from around the world on every street corner. The city also wears its history with pride, as centuries old buildings and monuments jostle next to glass and steel skyscrapers.





COLLEGE HIGHLIGHTS



A MULTIPLE AWARD-WINNING COLLEGE

In the past two years DLD College London has been named as a winner or finalist of 12 different independent education awards. Perhaps most notably the college was named as the 'Boarding School of the Year' and 'Special Judge's Award' winner at the prestigious Independent School of the Year Awards.



AT HOME IN THE CITY

DLD College London is the only school in central London where boarding and teaching facilities share the same building, with students living immediately above the college itself. Holistic, all-round pastoral care is delivered through close-knit 'Huddle' communities, each of which is led by one of our team of resident Houseparents, who can be contacted 24/7.



CREATIVE PASSION AND ENTREPRENEURIAL SPIRIT

London is a global capital for business and the creative industries, so it's no surprise that business and art are two areas of real strength in our teaching. DLD students benefit from access to industrial and creative hubs located in the city, and students progress to globally recognised institutions such as the Bayes Business School at City, University of London, and the University of the Arts London.



PROGRESS TO TOP LONDON AND GLOBAL UNIVERSITIES

We have built strong links with the many world-class universities located right here in London and can provide expert application guidance for institutions such as Imperial, King's College and UCL. We also specialise in progression to international universities, with a particular focus on North American institutions such as UCLA and NYU.



LONDON IS OUR CLASSROOM

Stepping outside of our building, students also have access to the diverse experiences on offer in London - one of the world's most cosmopolitan cities and an international hub for culture, commerce, and innovation.



“STUDYING IN LONDON IS A PRIVILEGE WHICH GIVES LOTS OF OPPORTUNITIES. STUDYING AT DLD HAS PREPARED ME FOR UNIVERSITY BY DEVELOPING MY INDEPENDENCE AND MATURITY.”

Adam from Lebanon

A Level student, now studying Accounting and Finance at King's College London.





“DLD IS UNIQUE IN THE SENSE THAT IT IS A VERY DIVERSE AND WELCOMING COMMUNITY. BOTH STUDENTS AND TEACHERS ARE VERY APPROACHABLE AND SHARE THE SAME INTEREST IN MAKING THE COLLEGE ENVIRONMENT AS MOTIVATING AS POSSIBLE.”

Maheyra from Bangladesh

A Level student, now studying Psychology and Language Sciences at University College London.

FOCUS ON AWARDS

DLD College London is one of the of the UK's most awarded schools. Here is a list of awards and commendations received by the college in the last two years.

AWARD	CATEGORY	RESULT
Independent Schools' Association (ISA) Awards 2021	Excellence and Innovation in Mental Health and Wellbeing	Winner
Independent Schools' Association (ISA) Awards 2021	Excellence and Innovation in Equality, Diversity and Inclusion	Finalist
Independent Schools' Association (ISA) Awards 2021	Excellence in Pupil Personal Development	Finalist
Independent Schools of the Year Awards 2021	International Student Experience	Finalist
Boarding Schools' Association (BSA) Awards 2021	Wellbeing & Mental Health Initiative Award	Winner
Tes Independent Schools Award 2021	Wellbeing Initiative of the Year	Highly Commended Finalist
Independent Schools' Association (ISA) Awards 2020	Innovation in Pupil Voice	Winner
Independent Schools of the Year Awards 2020	Special Judges' Award - Independent School of the Year	Winner
Independent Schools of the Year Awards 2020	Boarding School of the Year	Winner
Independent Schools of the Year Awards 2020	International Student Experience	Finalist
Carnegie Centre of Excellence for Mental Health in Schools	Boarding School Mental Health Award	Gold Medal (First school in the UK to receive this award)
Tes Independent Schools Awards 2020	Boarding School of the Year	Finalist



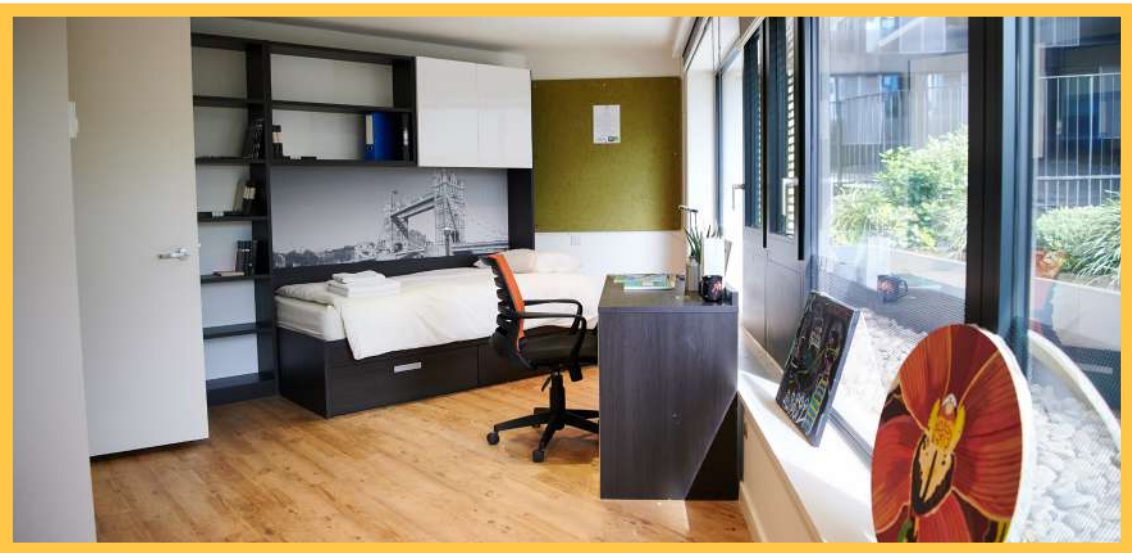
BOARDING IN LONDON

DLD is the only school in Central London with boarding on site. Students live immediately above college in one of 250 ensuite bedrooms, or with local London host families.

We want our boarders to feel that the college is their 'home away from home' so the boarding house is split into different groups, which we call 'Huddles'. A Huddle is a group of boarders organised by age, gender, and floor, overseen by a designated houseparent. Boys and girls are housed on separate floors.

ROOM TYPES

TWIN ROOM	Twin boarding room with a moveable wall that divides bedrooms, room has access to an ensuite washroom and shared common room.
PREMIER SINGLE ROOM	Single medium to large sized boarding room with ensuite washroom and shared common room.
SINGLE ROOM	Single boarding room with ensuite washroom and shared common room.
HOST FAMILY	Single room with shared bathroom. Private bathroom may be available on request.





Every room includes:

- A bed with bedding and linen
- A washroom with shower, basin, and toilet
- A desk and chair
- Wi-Fi access
- Fresh linen and towels every week
- Access to a common room with kitchenette

All rooms are offered on a full-board basis, with students able to choose from a range of freshly cooked meals served daily in our Global Kitchen.



“STUDYING HERE HAS HELPED ME TO COMMUNICATE WITH PEOPLE FROM DIFFERENT CULTURES. I ENJOYED DISCUSSIONS WITH OTHER STUDENTS WHERE I COULD HEAR DIFFERENT OPINIONS, AND STUDYING TOGETHER.”

Daisy from Korea

A Level student, now studying Architecture at University College London.



ABBHEY COLLEGE MANCHESTER

Exceptional learning in the heart of Manchester.

For the past thirty years we've been proudly based in the heart of Manchester, in that time we've grown to showcase some of the city's best qualities; innovation, pragmatism, a sense of humour and a practical spirit.

We have welcomed thousands of students from around the world into our friendly college community, and we take pride in helping our students to achieve personal and academic development and move on to world-class universities, many of which, like our local University of Manchester, are located in our region.

We are the smallest of the three Abbey DLD colleges, and also have the highest proportion of British students studying with us, which makes classes and life in college an interesting and invigorating mix of local and international cultures.

200+
STUDENTS



30+
DIFFERENT
NATIONALITIES

MORE THAN
40%
PROGRESS TO A
RUSSELL GROUP
UNIVERSITY EACH YEAR





**“OUR TEACHING
STYLE IS RIGOROUS,
CREATIVE AND
CENTRED ON
THE INDIVIDUAL
STUDENT. **EVERYONE
CONTRIBUTES,
EVERYONE IS
APPRECIATED,
EVERYONE IS
WELCOME.**”**

Chris Randell, Principal



MANCHESTER

An industrious past, a bright future.

The birthplace of the modern world, Manchester is well known for its outstanding cultural, creative and sporting achievements. The city is often referred to as the 'capital of northern England', and Mancunians are famed for their independent spirit, pride, good humour, and hospitality.

In recent years the city has experienced a cultural and economic boom, becoming the UK's third largest city by population, and second largest economy. Manchester's growth has earned it the nickname 'The Northern Powerhouse', it is home to some of the best museums in the country, and it has long been considered a leader in music, sport, and culture.





COLLEGE HIGHLIGHTS



A UNIQUE COLLEGE COMMUNITY

We are the smallest of the three Abbey DLD colleges, and we also have the highest proportion of British students. This makes us a great choice for students who want small classes and a personalised learning environment, and to socialise and build friendships with like-minded students from Britain and around the world.



ACCESS TOP-RANKED NORTHERN UNIVERSITIES

Our region is home to many of the UK's best universities, with prestigious Russell Group institutions such as Manchester, Leeds, and Liverpool within easy reach. We have been able to build strong university links, and often welcome guest lecturers and admissions tutors into the college to support our students.



COMBINE A SPORTING PASSION WITH YOUR STUDIES

Manchester is crazy about sport! We can offer students professional level coaching and training in both football and basketball alongside their academic studies. Our sporting students progress to top universities upon graduation, and some have even been signed up by professional and semi-professional teams in the UK and Europe.



FOCUS ON MEDICINE

We specialise in preparing students for medicine and work closely with top medical schools to ensure our candidates have the skills, knowledge, and experience to succeed. We even deliver a module as part of our medicine foundation programme in partnership with the University of Buckingham medical school.



LIVE AND STUDY IN THE HEART OF THE CITY

Manchester is consistently voted as one of the world's best cities to live and study in. As an Abbey Manchester student, you will be living and studying in the heart of one of Europe's most exciting cities, with amazing leisure, cultural, and sporting facilities on your doorstep and 24/7 support provided by our houseparents, tutors, and staff.



**“THE TEACHERS ARE THE BEST!
THEIR EXPERTISE INSPIRED ME TO
PURSUE A CAREER IN SCIENTIFIC
RESEARCH. AT MANCHESTER I
HAVE BECOME A BETTER AND
MORE MOTIVATED PERSON.”**

Suleyman from Turkey

A Level student, now studying Medical Biosciences at Imperial College London.





“STUDYING HERE HAS BEEN VERY HELPFUL BECAUSE I LEARNT EACH SUBJECT AT A DEEP LEVEL, AND THE TEACHERS WERE VERY HELPFUL IN PREPARING ME FOR UNIVERSITY. IT HAS HELPED ME GROW A LOT AS A PERSON AND HAS ALSO MADE ME A BETTER STUDENT.”

Fiona from Albania

A Level student, now studying Architectural Engineering at Cardiff University.

FOCUS ON COLLEGE LIFE

At Abbey College Manchester we treat our students as mature young adults and create a hard-working yet informal atmosphere.

We are a dynamic, exciting college, situated in the heart of Manchester and providing high quality, flexible programmes of study. A recent student survey highlighted how much our students enjoy the cultural, educational, and business opportunities afforded by learning in the city centre.

We aim to:

- Guide our students to achieve academic success and fulfil their aspirations.
- Respect and value each student by providing a friendly, safe, and supportive environment where students are happy and grow in confidence.
- Show a sensitive understanding of the challenges facing young people in the 21st Century by empowering students to make informed decisions and have the determination to achieve their goals.
- Prepare our students for university, their future careers, and to make a positive contribution to the community.

Every aspect of college life is based around the 5 qualities that we aim to develop in each of our students and call our '5 R's': Routine, Rigour, Responsibility, Resilience and Reflection.



Teaching and learning is rigorous, creative and focused on meeting each student's individual needs and achieving their individual goals. This means that small classes, high quality teaching and a personal approach are key to success.

Our 'Success in the Sixth Form' programme helps students study more effectively and achieve their university targets. Having so many world-class universities located in the region, it is no surprise to learn that around 60% of our students progress onto top-ranked universities.



BOARDING IN MANCHESTER

Students under the age of 16 at the start of the academic year live with one of our carefully selected local host families. Students aged 16 live in our college boarding house.

Students will have their own large bedroom with a study desk, clothes storage, and bathroom facilities. Breakfast, lunch, and evening meals are provided every day, internet connection, cleaning of room and laundry of clothes are all included.

For students aged 16 and over, our Clydesdale House residence is located within a 10-minute walk of the college and features 24 Hour security, secure entry and CCTV cameras, cycle storage, laundry facilities, onsite maintenance team, and weekly cleaning of kitchens. All student meals are provided on a full-board basis.

Live-in house parents supervise students to ensure their safety and wellbeing and organise a weekly programme of enrichment activities.



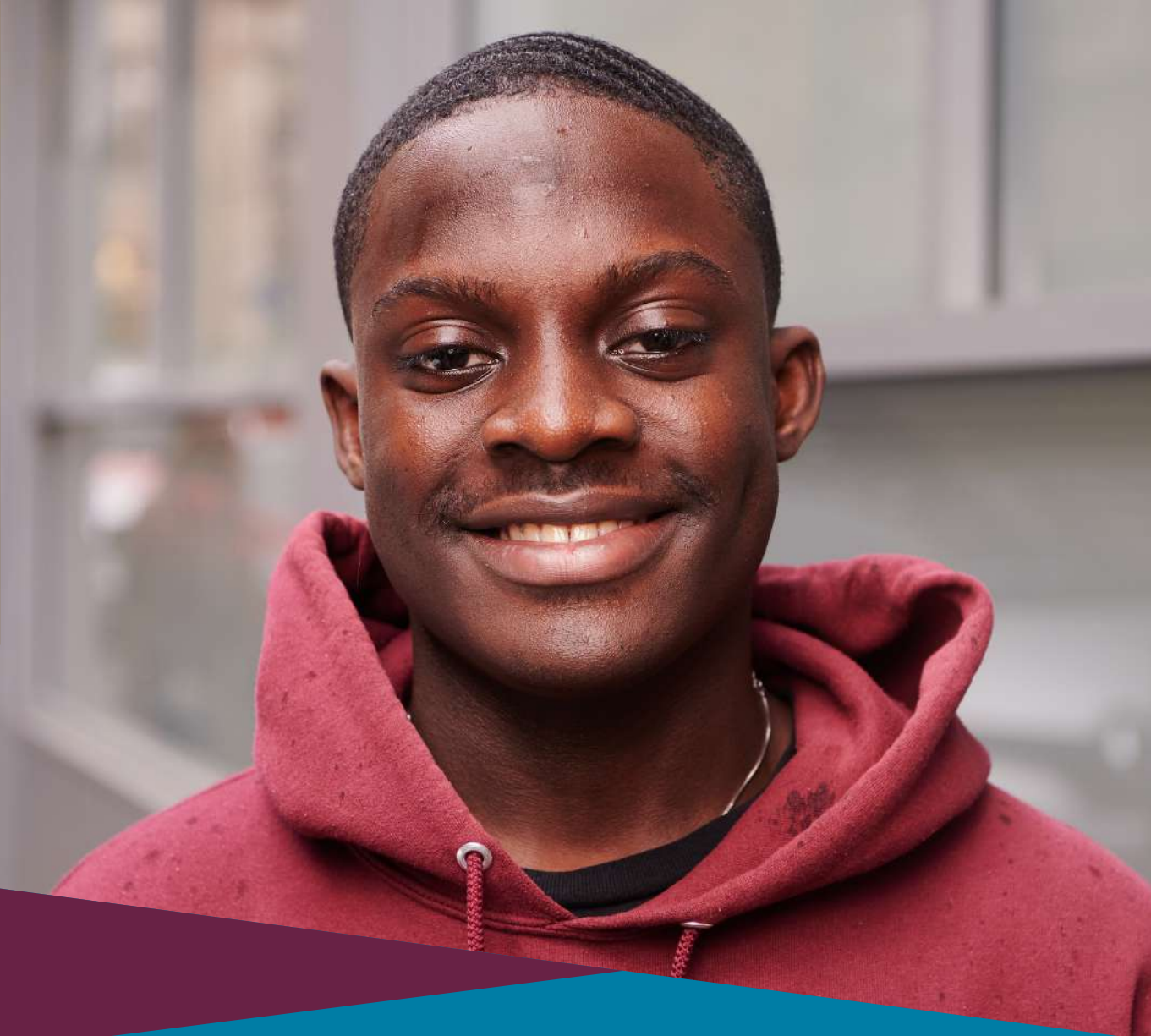


Clydesdale House offers single rooms in separate clusters for boys and girls. Each room has the following features:

- A 4ft wide bed (wider than a standard single bed)
- Desk and chair.
- Wardrobe and drawers.
- Shelves/storage space.
- En-suite bathroom comprising toilet, wash-hand basin and shower.
- Curtains and blinds.

Also Included in the boarding fees:

- Three meals per day. Breakfast, packed lunch and dinner all prepared by our in-house cook.
- Large shared kitchen, fully equipped with a wide range of appliances such as ovens, toasters, kettles, etc.
- Large shared living area, with sofa, dining table and 50 inch television.
- Good Wi-Fi connection.
- Weekly bathroom cleaning, bed linen & towels.
- Full-time Houseparents on-site 24 hours.
- All laundry.
- Indoor bike storage.
- Activities programme arranged by Houseparents (Please note some external trips will have an extra charge).



“I WAS MADE TO FEEL SO WELCOME BY EVERYONE, HOUSEPARENTS, OTHER STUDENTS AND TEACHERS BECAME FRIENDS.”

Eniola from Nigeria

Academic Studies with Football Training student,
now studying Applied Computing at Manchester Metropolitan University.

STUDENT DESTINATIONS 2021

Every year Abbey DLD students move on to join some of the world's most prestigious and highly ranked universities. Here is a summary of our 2021 student destinations:

A LEVEL, TOP 20 RANKED UNIVERSITY DESTINATIONS

STUDENT	COUNTRY/REGION	GRADES	COURSE
1. University of St Andrews			
Jocelyn	Indonesia	A*A*A*	Medicine
3. University of Cambridge			
Tianyu	China	A*A*A*	Computer Science
Yiming	China	A*A*A*	Natural Sciences
4. Imperial College London			
Dmitriy	United Kingdom	A*A*A*	Chemistry
Hoi Lam	Hong Kong	A*A*A	Biological Sciences
Ian	Malaysia	A*A*A*	Computing
Luling	China	A*A*A*	Chemistry
Pavindran	Malaysia	A*A*A*	Biological Sciences
Sarp	Turkey	A*A*A*	Medical Biosciences
Sofiia	Russia	A*A*A*	Aeronautical Engineering
Victoria	Malaysia	A*A*A	Biomedical Engineering
Ziyu	China	A*A*A*	Chemistry

STUDENT	COUNTRY/REGION	GRADES	COURSE
5. London School of Economics and Political Science			
Ana	Georgia	A*A*A*	Management
Ruiqi	China	A*A*A*	Mathematics and Economics
6. Durham University			
Aaron	Hong Kong	A*AA	Psychology
Simran	United Kingdom	BCC	Biological Sciences
7. University College London			
Anatolii	Ukraine	A*A*A*	Natural Sciences
Assiya	Kazakhstan	A*ABB	Population Health Sciences
Chan Hyuk	South Korea	A*A*A	Computer Science
Dahui	South Korea	A*BB	Architecture
Deyu	China	A*AAA	Chemistry
Hooman	Iran	AAB	Pharmacy
Junwen	China	A*AA	Social Sciences
Keyu	China	A*A*AA	Economics
Kiara	Italy	AAAA	English
Lance	Malaysia	A*A*A*	Engineering (Chemical)
Luca	United Kingdom	A*A*A*	Physics
Maherya	Bangladesh	A*AA	Psychology and Language Sciences
Minh Dat	Vietnam	A*A*A	Statistics, Economics and Finance
Oksana	Russia	A*A*A	Law
Peijia	China	A*A*AA	Chemistry
Qinglan	China	A*A*AB	Mathematics

STUDENT	COUNTRY/REGION	GRADES	COURSE
7. University College London (continued)			
Samuel	Hong Kong	A*ABB	History, Politics and Economics
Sophia	United States	A*AB	Global Humanitarian Studies
Yu Han	Malaysia	A*A*A*	Law
Zahra	Iran	A*A*A	Pharmacy
8. University of Warwick			
Chunyu	China	A*AAB	Physics
Hung Dung	Vietnam	A*A*A	Economics
Xi	China	A*A*AB	Economics
Xiyang	China	A*A*A*	Accounting and Finance
Zihan	China	A*A*A	Engineering
9. University of Bath			
Anne Umashime	Nigeria	AAC	Politics with Economics
Elliott	United Kingdom	A*AAA	Mechanical Engineering
10. Loughborough University			
Danniel	Nigeria	A*A*A*	Economics
11. Lancaster University			
Aimen	United Kingdom	A*A*A*A	Computer Science and Mathematics
Saif	United Kingdom	BB	Biology
Qianhuan	China	ACC	Chemistry
12. University of Glasgow			
Furong	China	ABB	Chemistry
Orla	United Kingdom	BB	Film and Television Studies

STUDENT	COUNTRY/REGION	GRADES	COURSE
12. University of Glasgow (continued)			
Suke	China	A*ACC	Mathematics
Yin Hang	Hong Kong	ABB	Mechanical Engineering
13. University of Edinburgh			
Kay Thari	Myanmar	AABC	Economics with Finance
Napatsorn	Thailand	A*A*A*	Veterinary Medicine
Sophie	United Kingdom	A*AA	English Literature
Ziyi	China	A*AA	Biological Sciences
14. University of Bristol			
Carl	Germany	AAB	International Policy
15. University of Leeds			
Abhay	United Kingdom	AAA	Law
Artemiy	Russia	A*AB	Fashion Marketing
Charlie Angel	Indonesia	ABB	Chemical Engineering
Hemant	Australia	AAA	Computer Science
16. University of Southampton			
Aung Phone Thant	Myanmar	AABB	Civil Engineering
Kiet	Vietnam	A*AB	Physics
Resul Hikmet	Kazakhstan	A*AB	Law
18. King's College London			
Adam	Lebanon	A*AA	Accounting & Finance
Byron	Hong Kong	A*AAB	Biomedical Science
Elizabet	Bulgaria	ABB	Geography
Huanzhao	China	A*A*A*A*	Mathematics
Julia	Poland	A*AB	Biomedical Science
Mariia	Russia	A*A*AB	Biomedical Science
Ngoc Anh	Vietnam	A*A	Mathematics

STUDENT	COUNTRY/REGION	GRADES	COURSE
18. King's College London (continued)			
Richard	Estonia	A*A*A	European Politics
Subeen	South Korea	A*AA	Economics
Xingyu	China	AAA	Accounting & Finance
Yujia	China	ABD	Mathematics
20. University of Aberdeen			
Mohammad	Jordan	BBB	Life Sciences





A LEVEL, OTHER TOP 50 DESTINATIONS

RANK	UNIVERSITY	NO OF STUDENTS
21	University of Exeter	2
22	University of Sheffield	2
23	University of Manchester	12
30=	University of Liverpool	3
33	SOAS University of London	3
34	University of Reading	1
35=	Cardiff University	1
35=	University of Dundee	1
37	University of Leicester	3
40	Queen Mary, University of London	9
42	Newcastle University	4
46	University of Kent	1
47	University of Sussex	2

OTHER A LEVEL DESTINATIONS

SELECTED UNIVERSITIES	
University of the Arts London	BIMM Institute
University of Buckingham	City, University of London
University College Dublin (Ireland)	Florida Institute of Technology (USA)
University of Greenwich	University of Hong Kong
Istituto Marangoni London	Kingston University
Luiss University (Italy)	Manchester Metropolitan University
Northumbria University	Oxford Brookes University
University of Poznan (Poland)	Ravensbourne University London
University of Staffordshire	Three Rivers University (Canada)
UCLA (USA)	University of Westminster

INTERNATIONAL FOUNDATION PROGRAMME, TOP 25 RANKED DESTINATIONS

STUDENT	COUNTRY/REGION	OVERALL SCORE	COURSE
6. Durham University			
Jinqi	China	84%	Economics and Management
Kiu Yuet	Hong Kong	89%	Economics
Thanabodee	Thailand	90%	Business and Management
Wanrou	China	83%	Business and Management
Yihan	China	79%	Psychology
9. University of Bath			
Jakhangir	Kazakhstan	93%	Computer Science
Princely Chukwunwike	Nigeria	83%	Mechanical Engineering
Wen Chien	Taiwan	84%	Biochemistry
10. Loughborough University			
Nan Myat Mon Kay	Myanmar	86%	Civil Engineering
11. Lancaster University			
Jiajun	China	74%	Economics and Finance
Minyu	China	79%	Accounting and Finance
Ning	China	67%	Business Management
Nuria Raposo	Mozambique	86%	Business Management
Wai Chung	Hong Kong	74%	Chemical Engineering
Yongqing	China	74%	Accounting and Finance
13. University of Edinburgh			
Xiaohua	China	86%	Accounting and Finance



STUDENT	COUNTRY/REGION	OVERALL SCORE	COURSE
15. University of Leeds			
Haluk	Turkey	91%	Computer Science
Ibrahim	Sudan	67%	Pharmacology
Mbechun	Nigeria	74%	Chemical Engineering
Pak Kiu	Hong Kong	88%	Economics and Politics
Sadeq Jaafar	Iraq	72%	International Relations
Shesen	China	83%	Economics and Finance
Yucheng	China	81%	Business Management
Zhiyi	China	75%	Business Management
16. University of Southampton			
Congying	China	76%	Fashion Marketing with Management
Ruijia	China	74%	Fashion Marketing with Management
Shenao	China	82%	Mathematics with Finance
Siyu	China	77%	Accounting and Finance
Tenghai	China	72%	Economics and Business Management
18. King's College London			
Aldiyar	Kazakhstan	79%	Biomedical Science
Aleyna	Bulgaria	83%	Political Economy
Atiyeh	Iran	88%	Biomedical Science
Aysel	Bulgaria	81%	History and International Relations
Botao	China	87%	Economics
Ibrahim Suleyman	Nigeria	81%	Electronic Engineering

STUDENT	COUNTRY/REGION	OVERALL SCORE	COURSE
18. King's College London (continued)			
Jas	China	72%	International Development
Laura	Kazakhstan	88%	International Management
Lester	Hong Kong	74%	Digital Culture
Medya	Iran	81%	Political Economy
Shihao	China	88%	Mathematics with Management and Finance
19. University of York			
Li Yi	Malaysia	80%	Psychology
21. University of Exeter			
Abdul-Jabbar	Nigeria	73%	Mechanical Engineering
Minh Hien	Vietnam	78%	Accounting and Finance
Minh Tam	Vietnam	90%	Marketing and Management
Osaze David	Nigeria	74%	Marketing and Management
22. University of Sheffield			
Xuxiang	China	76%	Accounting and Financial Management
Yanzhe	China	80%	Accounting and Finance
23. University of Manchester			
Puteri Adriana	Malaysia	78%	Psychology
Xinyu	China	89%	Management
Yiheng	China	86%	Electronic Engineering
Yuhan	China	72%	Management

INTERNATIONAL FOUNDATION PROGRAMME, OTHER TOP 50 DESTINATIONS

RANK	UNIVERSITY	NO OF STUDENTS
26	Royal Holloway, University of London	3
28	University of Nottingham	2
30=	University of Liverpool	3
32	University of Surrey	2
34	University of Reading	1
40	Queen Mary, University of London	6
42	Newcastle University	2
45	Aston University	1
46	University of Kent	1
47	University of Sussex	2
48	Keele University	1

OTHER INTERNATIONAL FOUNDATION PROGRAMME DESTINATIONS

SELECTED UNIVERSITIES	
University of the Arts London	University of Buckingham
City, University of London	University of Central Lancashire (UCLan)
Coventry University	Goldsmiths, University of London
University of Huddersfield	The University of Law
Liverpool John Moores University	London Institute of Banking and Finance
Manchester Metropolitan University	Regent's University London
Royal Birmingham Conservatoire	Royal College of Surgeons in Ireland (RCSI)
University of Salford	St George's University Grenada
University of the West of England	University of Westminster



BTEC STUDENT DESTINATIONS

COURSE/UNIVERSITY
Public Relations at University of the Arts London
Film Production and Cinematography at Bournemouth University
Sports Media at the University of Chichester
Film and Television Studies at the University of Glasgow
Business Enterprise and Entrepreneurship at Oxford Brookes University
Events Management at Oxford Brookes University
Computer Science at Queen Mary University of London
Digital Media at the University of Roehampton
Business Management at the University of Westminster
Illustration and Visual Communication at the University of Westminster
Business and Management at the University of York



TERM DATES AND FEES

2022/23 TERM DATES*

Autumn Term	<p>Thursday 1st September 2022 – Wednesday 14th December 2022 (DLD College London)</p> <p>Monday 5th September 2022 – Friday 16th December 2022 (Abbey College Cambridge)</p> <p>Monday 12th September 2022 – Friday 16th December 2022 (Abbey College Manchester)</p>
Autumn Half Term	<p>Monday 17th October 2022 – Friday 28th October 2022 (DLD College London)</p> <p>Monday 24th October 2022 – Friday 28th October 2022 (Abbey College Cambridge and Abbey College Manchester)</p>
Spring Term	<p>Tuesday 10th January 2023 – Friday 31st March 2023 (DLD College London)</p> <p>Monday 9th January 2023 – Friday 31st March 2023 (Abbey College Cambridge)</p> <p>Monday 9th January 2023 – Thursday 6th April 2023 (Abbey College Manchester)</p>
Spring Half Term	<p>Monday 13th February 2023 – Friday 17th February 2023 (All Colleges)</p>
Easter Holiday	<p>Monday 3rd April 2023 – Friday 14th April 2023 (Abbey College Cambridge and DLD College London)</p> <p>Friday 7th April 2023 – Friday 14th April 2023 (Abbey College Manchester)</p>
Summer Term	<p>Monday 17th April 2023 – Friday 30th June 2023 (All Colleges)</p>
Summer Half Term	<p>Monday 29th May 2023 – Friday 2nd June 2023 (All Colleges)</p>

*Term dates are provided for illustrative purposes only and liable to change. Please contact each college for official term dates.

2022/23 INTERNATIONAL TUITION FEES

(All fees are yearly unless otherwise stated)

	ABBAY COLLEGE CAMBRIDGE	DLD COLLEGE LONDON	ABBAY COLLEGE MANCHESTER
GCSE Two Year Programme (Sep 2022 start)	£33,200	£33,000	£22,440
GCSE 18 Month Programme (First 6 months, Jan 2023 start)	£28,850	-	£17,510
GCSE One Year Programme (Sep 2022 start)	£33,200	£33,000	£26,305
A Level Three Year Programme (Sep 2022 start)	-	-	£22,440
A Level Two Year Programme (Sep 2022 start)	£33,200	£33,000	£26,305
A Level 18 Month Programme (First 6 months, Jan 2023 start)	£28,830	£28,700	-
International Foundation Programme Two Year (Sep 2022 start)	-	-	£22,400
International Foundation Programme 18 Month (First six months, Jan 2023 start)	-	-	£17,510
International Foundation Programme One Year (Sep 2022 start)	£33,200	£33,000	£26,305
BTEC 2/1 Year Programme (Sep 2022 start)	-	£33,000	-
Academic Studies with Basketball (Sep 2022 start, including accommodation)	-	-	£32,950
Academic Studies with Football (Sep 2022 start, including accommodation)	-	-	£38,500 Elite £35,000 Development
Pre-Sessional/Academic Preparation Programme (Per term, Jan/April/Sep start)	£9,450	£9,400	-
British Boarding School Experience/English with Sport September - December January - April April - June	£17,250 £14,300 £10,950	£18,500 £15,400 £12,100	£14,260 £12,080 £8,780

2022/23 EEA TUITION FEES

(All fees are yearly unless otherwise stated)

	ABBAY COLLEGE CAMBRIDGE	DLD COLLEGE LONDON	ABBAY COLLEGE MANCHESTER
GCSE Two Year Programme (Sep 2022 start)	£26,050	£25,950	£12,630
GCSE 18 Month Programme (First 6 months, Jan 2023 start)	£21,600	-	£9,190
GCSE One Year Programme (Sep 2022 start)	£26,050	£25,950	£12,630
A Level Two Year Programme (Sep 2022 start)	£26,050	£25,950	£14,205
A Level 18 Month Programme (First 6 months, Jan 2023 start)	£21,600	£21,500	-
International Foundation Programme Two Year (Sep 2022 start)	-	-	£14,130
International Foundation Programme 18 Month (First 6 months, Jan 2023 start)	-	-	£10,930
International Foundation Programme One Year (Sep 2022 start)	£26,050	£25,950	£16,470
BTEC 2/1 Year Programme (Sep 2022 start)	-	£25,950	-
Academic Studies with Basketball (Sep 2022 start, excluding accommodation)	-	-	£15,000
Academic Studies with Football (Sep 2022 start, excluding accommodation)	-	-	£19,000 Elite £16,415 Development
Pre-Sessional/Academic Preparation Programme (Per term, Jan/April/Sep start)	£7,500	£7,450	-
British Boarding School Experience/English with Sport September - December January - April April - June	£17,250 £14,300 £10,950	£18,500 £15,400 £12,100	£14,260 £12,080 £8,780



DLD
COLLEGE
LONDON
ESTABLISHED 1931



BOARDING FEES

All rooms are offered on a full-board basis unless otherwise stated.

ABBHEY COLLEGE CAMBRIDGE

ROOM TYPE	YEARLY FEE
Abbey House	
Standard Single Room	£23,900
Superior Single Room	£25,450
Standard Twin Room	£18,550
Superior Twin Room	£19,700
Purbeck House	
Studio Room	£25,950
Apartment	£27,600
Tripos Court	
Standard Single Room	£21,200
Superior Single Room	£22,800
Orchard House (Available from January 2023)	
Standard Single Room (Half Board)	£17,500
Superior Single Room (Half Board)	£18,300



DLD COLLEGE LONDON

ROOM TYPE	YEARLY FEE
Twin Room	£20,100
Premier Single Room	£28,850
Single Room	£26,200
Host Family Room (Breakfast or Half Board options)	£12,100 - £14,700

ABBEY COLLEGE MANCHESTER

ROOM TYPE	YEARLY FEE
Standard En-suite Room	£14,350
Corner En-suite Room	£15,350
Premium En-suite Room	£16,995
Host Family Room	£12,050



APPLY NOW

Simply scan the code to apply to study with us.





mitre





Abbey DLD Group of Colleges
50 Queen Anne Street,
London W1G 8HJ
Tel: +44 (0) 20 7487 6000
www.abbeycolleges.co.uk



α+ Alpha Plus
group

Abbey DLD Group of Colleges is part of the Alpha Plus Group Ltd.